

47a

Dalgety Drive

AVAILABLE:

November 2020

OVERVIEW:

- A modern new high-stud industrial warehouse facility

FEATURES:

- Rear site with dedicated access off Dalgety Drive
- Concrete yard with canopy
- Separated car parking
- Tilt-slab construction

Ewan Cameron
Portfolio Manager
+6421 287 7990
cameron@pfi.co.nz

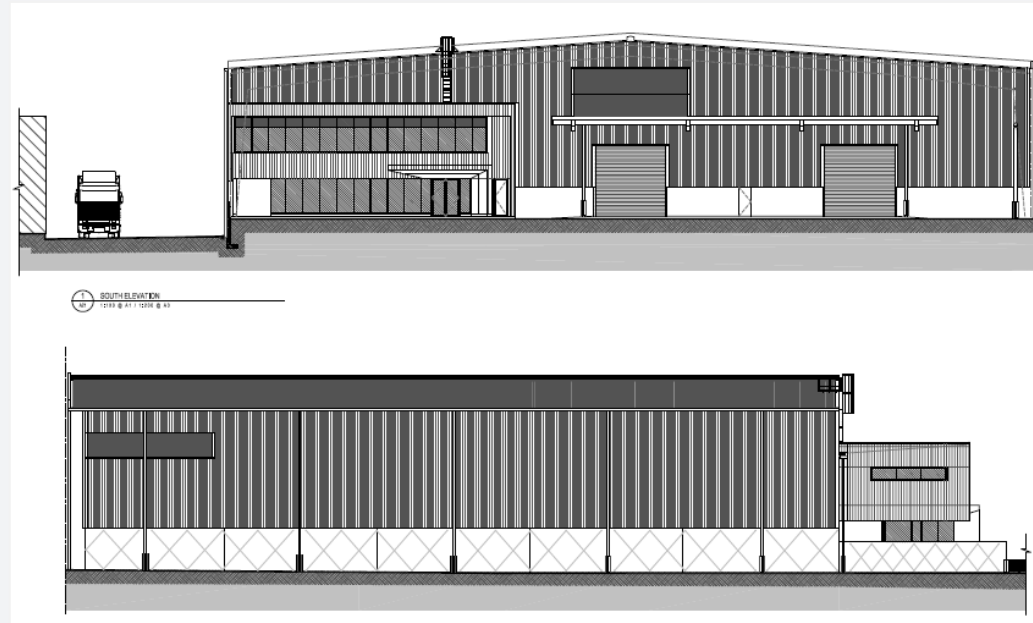
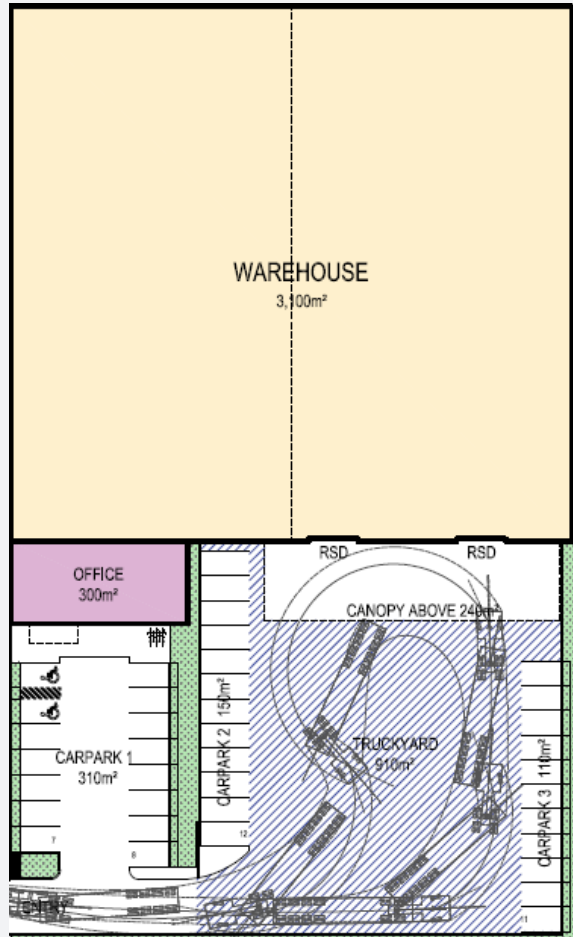
Rodrigo Herring
Asset Manager
+6421 466 051
herring@pfi.co.nz



47a Dalgety Dr, Wiri, Auckland 2104, New Zealand



<https://www.propertyforindustry.co.nz/about-pfi-tenant/property-portfolio/property/29>



NEW DESIGN & BUILD - COMING SOON
Practical completion date estimated to be November 2020

47a

Dalgety Drive



warehouse
3,100 sqm



office
300 sqm



canopies
240 sqm



yard
910 sqm



carparks
37