

44

MANDEVILLE STREET

AVAILABLE

Now

OVERVIEW

Large high stud warehouse with showroom/offices, full circular yard and carparking.

FEATURES

- Centrally located in Riccarton with good access to Blenheim Road and in proximity of the CBD.
- Recent refurbishment works including new office/show room space and new clearlights.
- Five tonne gantry crane installed at the building.

Rodrigo Herring

Asset Manager

+6421 466 051

herring@pfi.co.nz

Luke Glen

Property Manager

+6427 4567 879

glen@pfi.co.nz



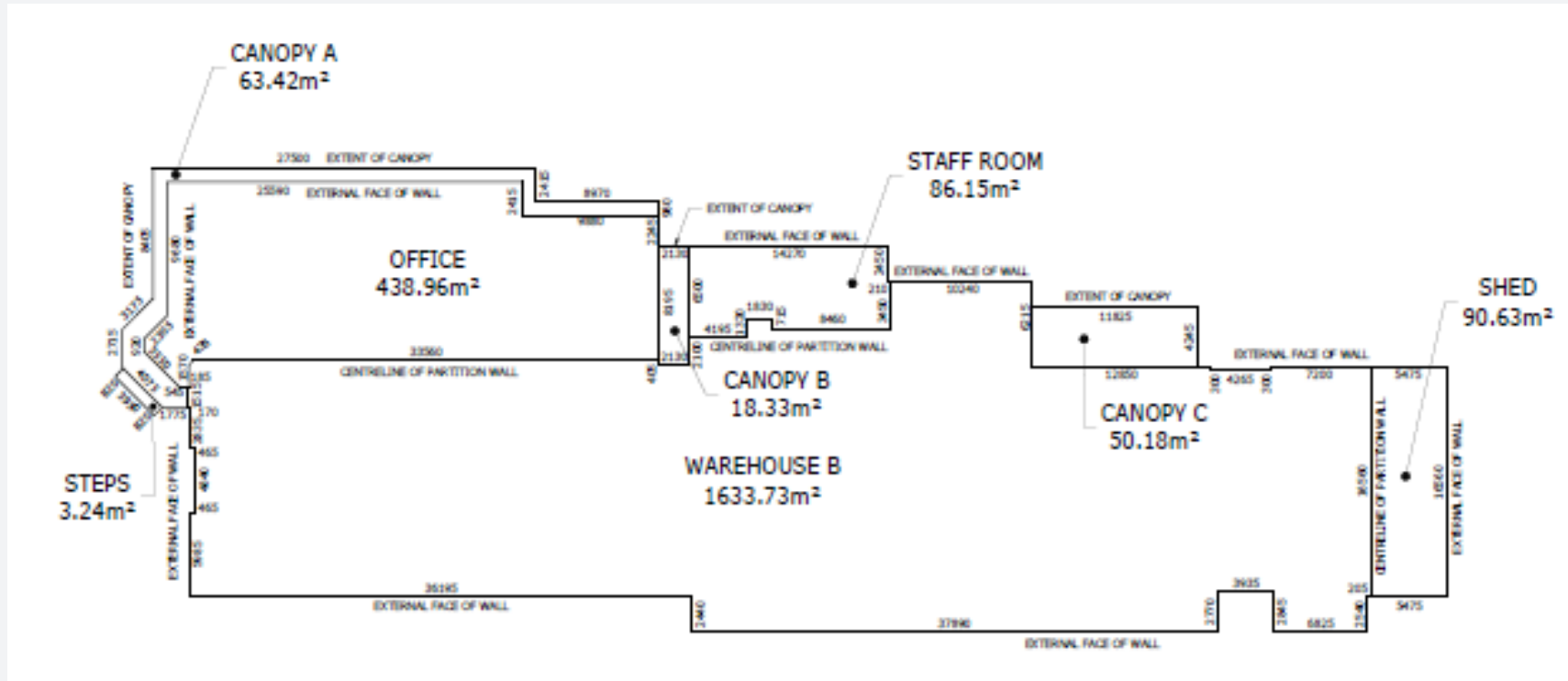
44 Mandeville Street, Riccarton, Christchurch 8011



<https://www.propertyforindustry.co.nz/about-pfi-tenant/property-portfolio/property/15084>

44

MANDEVILLE STREET



warehouse
1,634 sqm



office
525 sqm



yard
Large concrete yard



carparks
25 (approx.)