

# 47a

## Dalgety Drive

### AVAILABLE:

TBA

### OVERVIEW:

- A modern new high-stud industrial warehouse facility

### FEATURES:

- Rear site with dedicated access off Dalgety Drive
- Concrete yard with canopy
- Separated car parking
- Tilt-slab construction

**Ewan Cameron**  
Portfolio Manager  
+6421 287 7990  
[cameron@pfi.co.nz](mailto:cameron@pfi.co.nz)

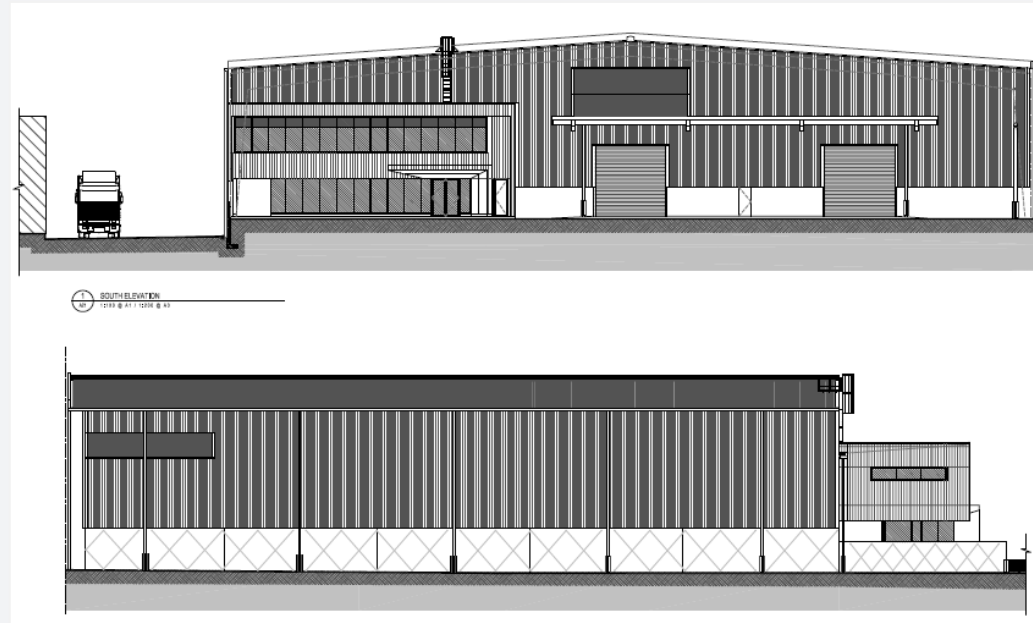
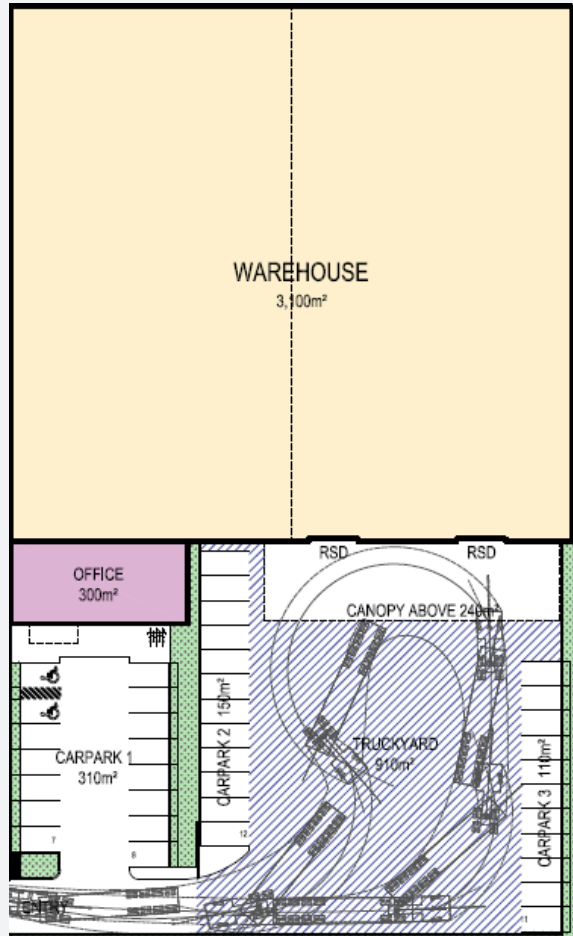
**Rodrigo Herring**  
Asset Manager  
+6421 466 051  
[herring@pfi.co.nz](mailto:herring@pfi.co.nz)



47a Dalgety Dr, Wiri, Auckland 2104, New Zealand



<https://www.propertyforindustry.co.nz/about-pfi-tenant/property-portfolio/property/29>



**NEW DESIGN & BUILD - COMING SOON**  
Practical completion date TBA

# 47a

## Dalgety Drive



warehouse  
3,100 sqm



office  
300 sqm



canopies  
240 sqm



yard  
910 sqm



carparks  
37